

**JACOBS** GLOBAL



**SERVING THE PELLETING, GRINDING AND  
MILLING INDUSTRY...WORLDWIDE**

800-831-2005    [jacobsCorp.com](http://jacobsCorp.com)    712-755-3131

# HAMMER MILL REPLACEMENT PARTS

---

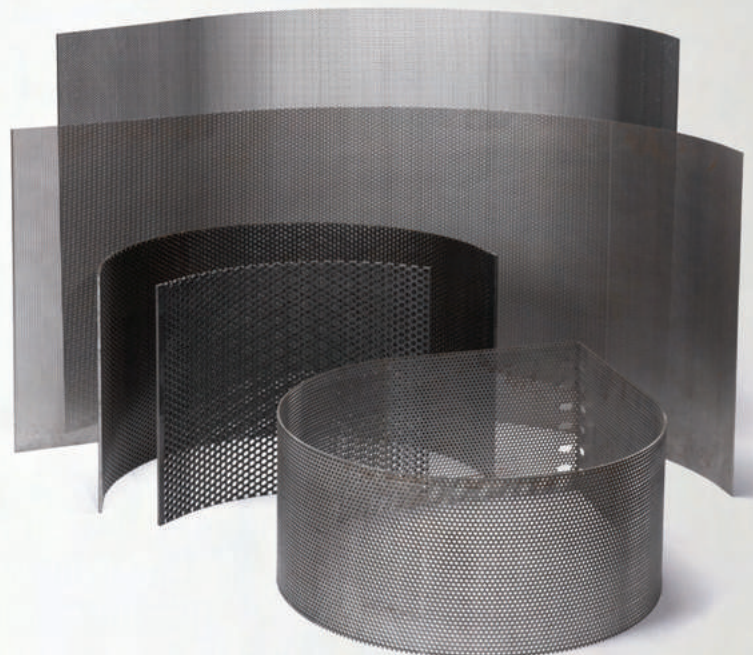
For decades, Jacobs has been manufacturing quality, long-wearing hammermill hammers. Our hammers are formed from a special steel alloy. Hammers are machined, hard-faced, and heat-treated to match user requirements.

Only Jacobs hammers feature **TruBore™** rod holes for less rod wear and better life. Along with **STC™** (Suspended Tungsten Carbide) hard facing, you are sure to get extended life out of your hammers.



Jacobs rods are heat treated to a depth of .180 while the competitor's are .030. That's six-times the industry standards. Our rods are available for most makes and models, but can also be custom designed to fit your needs. Don't forget your spacers and lock collars!

One thing that sets Jacobs apart from our competition is our ability to plan ahead and keep material in stock. While we set the standard in lead times, emergencies do happen. If you find yourself in a bind be sure to ask about our expedite options.



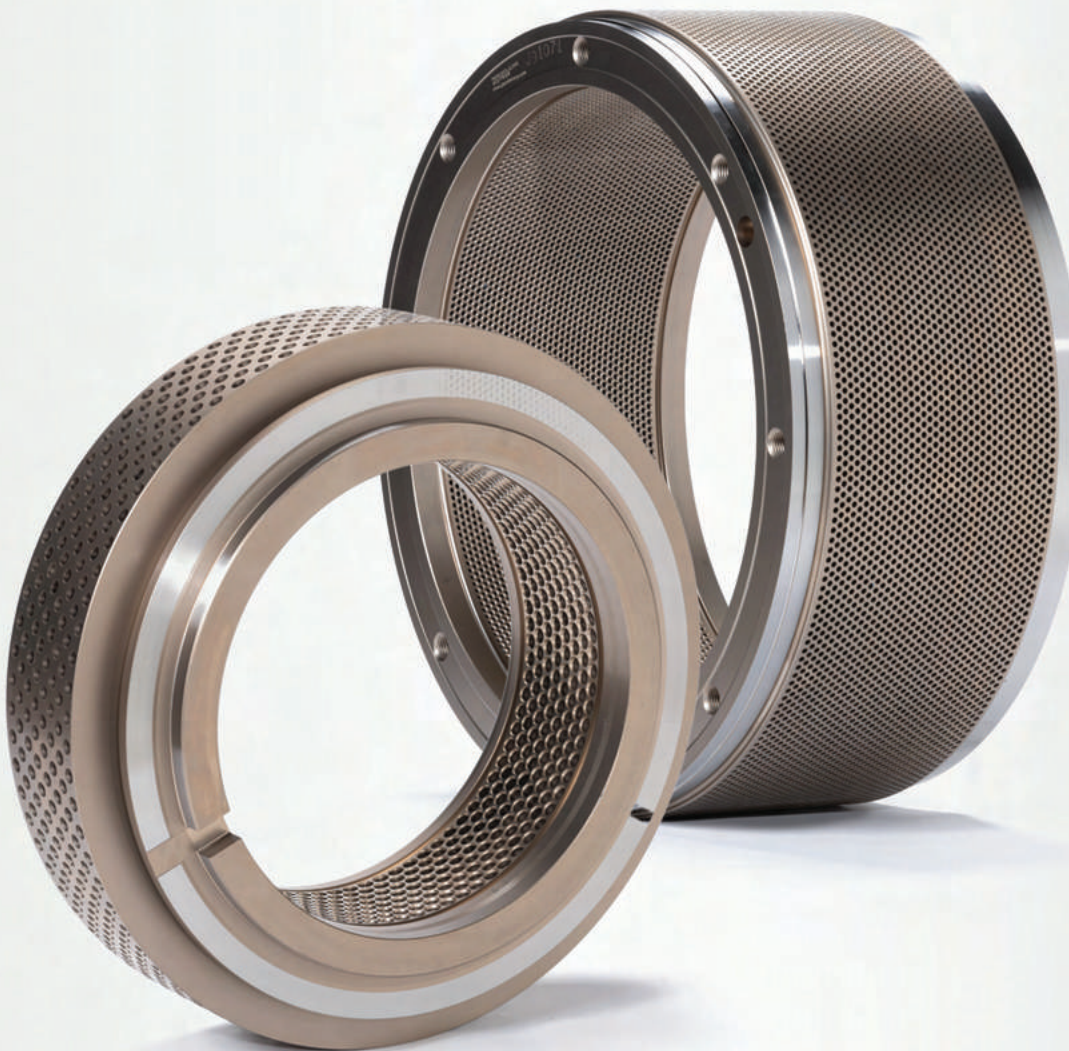
# PELLET MILL REPLACEMENT PARTS

---

Jacobs dies are proven to increase efficiency and to provide the most tons per hour. Our engineers are on staff to assist in developing a die to fit your specific pelleting needs. Between our industry leading lead times and various inventory programs, Jacobs is sure to get you your die when you need it.

We proudly offer four unique types of steel forgings to satisfy our customers various pelleting application needs.

**·Lightning ·J4 Alloy ·Hi-Chrome #5 ·Hi-Chrome**



## Also Available:

---

- Die Clamps
- Wear Rings
- Shear Pins
- Compression Bolts
- Clamp Gauges
- Drive Keys



**HT-**  
Corrugated  
(open end)

**HTW-**  
Corrugated  
(closed end)

**TRC-**  
Tungsten  
(not available  
in XTR style)

**HTD-**  
Dimple

**HTWH-**  
Corrugated  
(helical,  
closed end)

**XTR** roll shells have been developed exclusively by Jacobs to wear longer than any other type of roll shell in use today. The **XTR** shells are hardened to a depth of .180" (*six-times deeper than the leading competitor*)! The deeper hardness provides longer life by mitigating the excessive wear that occurs when a shell is worn below the standard 030" case depth the competitors offer.

**XTR** shells are available for most model pellet mills. Most popular sizes and corrugation styles can be shipped from stock within 24 hours, or less. The next time you have your roll assemblies rebuilt, ask to try the new **XTR** shells in your mill.

# PRO-ROLL

- Designed specifically for pellet mills
- Extreme high load carrying capability
- More forgiveness for accidental operator neglect
- Proven to reduce roll failure by 72%



*Pro-Roll™ is NSF H1 approved which allows for accidental food contact*

# DIE & ROLL SHELL REWORK DEPARTMENT

At Jacobs, we offer a reworking and retuning service for any die. All dies will undergo cleaning, resurfacing of the pad, and rechamfering of the holes.

Every die that is received will also have an inspection report that includes recommendations for wear components like roll shells, wear rings, clamps, etc. If necessary, we will also help you in remodeling the hole pattern on our Jacobs' dies.

Before sending in your die for rework, we recommend you reach out to your representative to go over the eligibility of your die to be reworked.

Die Pad Before

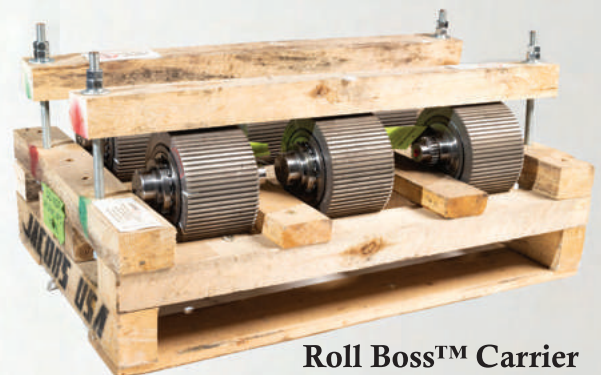


Die Pad After

Before Rework



After Rework



Roll Boss™ Carrier

Before



After

Another service Jacobs offers is roll shell rebuilding. Jacobs will schedule a pick up for your used-up assemblies. Once they arrive to us, we break them down and evaluate what parts are good and which need replaced. Your sales representative will contact you along the way with any important information and part needs. Once your assemblies are rebuilt and filled with compatible grease, we will ship them back to you on our returnable **Roll Boss™** carrier.

# DECADES OF COMMITMENT TO QUALITY AND SERVICE

---



Jacobs manufacturing plant for pellet mill replacement parts as well as our die and roll shell rework department



Jacobs general office and manufacturing plant for hammermill replacement parts



Jacobs Chinese manufacturing plant

## QUALITY POLICY

Jacobs Global is dedicated to a policy of meeting our customers' needs. Our objective is to produce and deliver a competitive, quality product that fully complies with our specifications. The production and delivery of the product will be timely for our customers.



2510 S. 12th St  
PO Box 727  
Harlan, IA 51537-0727 USA  
Phone: 712-755-3131  
Fax: 712-248-8737  
Toll Free: 800-831-2005  
Email: [jacobs@jacobscorp.com](mailto:jacobs@jacobscorp.com)  
Website: [jacobscorp.com](http://jacobscorp.com)